

# **Process apprehension, functioning and effects of creative creations on beholder**

## **Author of hand down beholder their feelings and enjoyment through their page**

Convey content everybody's concrete company image, by way of certain specific feel like, is inner space beholder compared and confronted with his internal feelings, and are-if these feelings in have in the bag interworking line (correlation, partial confrontation), is this company image beholder perceives affirmatively, in one word he likes (harmoniously with him chime in). Is it a similar to as with woman, which him like it not only physically, but after mental and human page, what is internally, how thinks, acts also how how about and the over what confabulate.

As far are feelings beholder distinct, but in part with coincident with of autor, company image with beholder like it also only in part. This status directly affects marketability concrete creations - annihilating major part has behalf can purchase under full price only 100% functional product. Contingency, that author of also beholder feelings coincident on 100% it is very small as far as improbable (once single egg twins or siamese twins with equal bottoms namely be without equal chic and argufy).

Iintensity and amount depths enjoyment and functioning creations it is always addicted on importance elected issue, his role and effect creations and especially on managing his processing after page artistic also technical. Case in the case of creations cursory and primitive type, reaching levels as far as sheer featureless decor, attend also to his disregard or overlooking.



## **Attractive viewy creative creations is given his in letter and spirit**

Have any page cannot be dead nuts about to all, is it a mere vision, because everybody is another and perceives otherwise, with another amount heart, with another

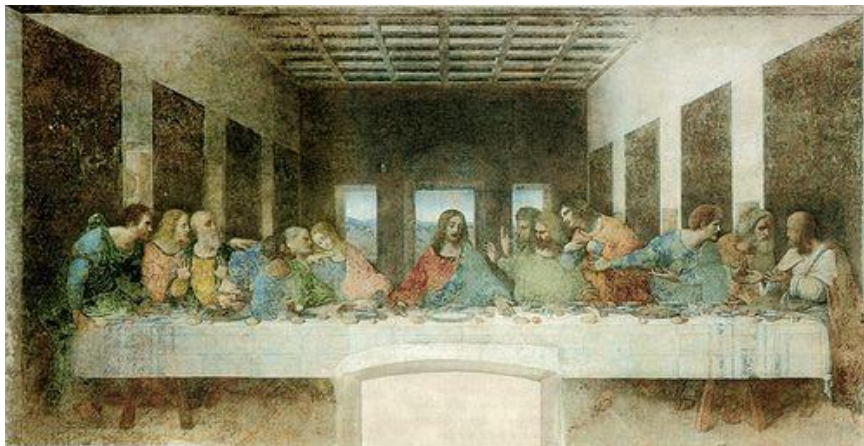
**chic, with another depth and another intensity, with by other environment acquaintance and with another behalf and another period.**

**Like it with - it means status, when anybody or anything raises in a given subject view feelings, and this evoke artistic hardware designedly or unwittingly, unwillingly - here's meant the internal functioning creations.**

**Enjoy entails light hand carry out also certain aesthetic conditions and certain peace chic - here is a cursory, visually perceived aesthetic page creations. If they do beholder page like it aesthetically and militates-if at him also feel like positively, such in this case beholder company image assessing affirmatively. Is-if of such company image on exhibition best part of, accordingly major part, beholder with like it also all slope orientation, hence her author of and this information further amount.**

**As far beholder author of also creations fail to understand and with images in a certain, even also partial amount bear, but after all announce, that him exhibition like it, such tells untruths, despite the fact that is otherwise decent customer. He namely cannot tell the truth, that him anything does not like or that he it like it only in part, because would be into questioning (authored, every man) why - here would must begin assemble account for anything, dat of co do not understand how about once cannot and basis once be not willing.**

**He would have to such in open court acknowledge and bewray, as though this actually at all do not understand, that it is accordingly craftman illiterate, analphabet, thus directly as dull as ditchwater (and this anyone never countenancing no), although it is perhaps otherwise educated and brainy. Therefore be made majority of people for exhibitions - private view always somehow in quiet and furtively lose in (except any individualist, able to be in this to all fuck about with, argue also argue back, be after basis, get on for core, be passed through self reflection, deteriorating arrest and any are even aptly with also argufy).**



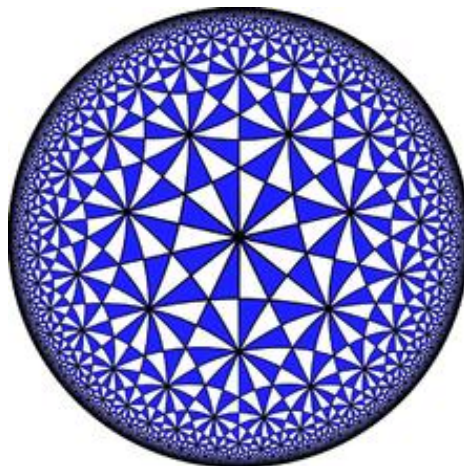
## **Harmony beholder with authored is attainment communication**

Beholder must with authored identify with, assemble and chime in on the same or extremely similar to cycles per minute, vibe and actively resonate (constitute also next, partial concordant frequencies - feelings and their colours, shades, depth, beef), and that is (case in the case of a closely aimed, specific and distributively abnormal build or forms term or achievement and have some as well also rare and out of the ordinary, as for example mythologic content) extremely individualized and complex law suit.

Beholder alone by apprehension creations goes through a process confrontation with authored as with person by means of perceived creations, by way of media serving for amount carried over a concrete or conceptual ideas, rounds, beef, which in beholder evokes authored intended feel like, enjoyment, company image, concrete or conceptual percept.

Ain process apprehension artistic creations (and this full of have to do with also his creation) is process activities east neural frameworks and interferes also next under ambit awareness for areas extrasensory apprehension ESP (Extra Sensory Perception).

Beholder in concluding aftereffect by (or even after) apprehension creations equates life feelings, enjoyment and emotions communicate authored with its feelings, enjoyment and emotions, by way of its environment acquaintance and attitudes and its self assessment.



## **Functioning author of on beholder in him leave aftereffects**

In a trice apprehension creations (at some time also after), attend subconsciously to of the process ain active functioning author of through their page on beholder, which consequently goes through internally ablutionary, karmic, enriched status, eventually opposite status, but always a law suit (also incomprehension creations is enjoyment - barrenness, voids, arithmetic underflow, boredom).

Concluding aftereffect hereof of the process close in by beholder have in the bag change his actual attitude, idea, status, self assessment and by other parameter, thus attend to certain altered his ain personalities, that has or will be exercise influence on beholder next bare life in accordance with change his thinking and concluding aftereffect also change his acts.



### **Persona author of is for beholder or hearer big**

Beholder respects author of as person of craftman, accordingly as customer endowed possibility be able and know the for over himself and accordingly is taking author of - craftman as his likely calendar, as the source of idea, attitude, moralities, chic and the like. for one of his own bare life.

From this analysis of the process apprehension and functioning emerges, as though big name author of is by far more remarkable and responsibly, than to be themselves believe. Authors shall they her much furtively tamper with second by people (and this even in the composition theirs inner space, which determines to their conduct and acts) by wholesale and alter such associate company and the world, by a majority to better ones. Have knowledge of it all autocrats and uncooperative author of with accordingly preemptively quick deprive and all along get rid.

### **These principles applies to all sphere of culture and art**

These principles of the process apprehension author of creations beholder and communication among them including his functioning and effect of true for by others branch of science cultures. Decides not, whether is a creations in grain artistic or about creations cursory and commercially aimed.

Creations with varies attractive status, which is intended theirs form of and content, theirs role, levels and intensity or by contraries absence married ideas, information or

**feel like. Everyone has the contingency preference their of interest has and needs as, also such has also ain individualized and freedom choice be after creations second, or provision is perhaps even alone for second childhood be formed.**

**Otakar Jalůvka**

**[otacar@seznam.cz](mailto:otacar@seznam.cz)**

**<http://www.jaluvka.com/author.htm>**

Copyright © 2013 Otakar Jalůvka. All rights reserved. Všechna práva vyhrazena.